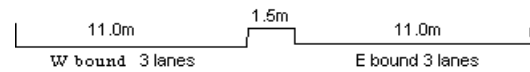


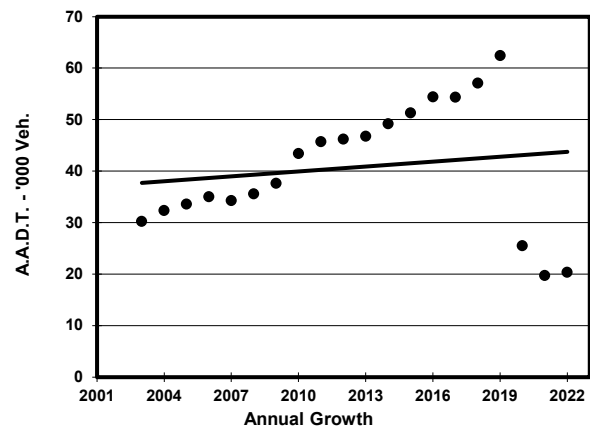
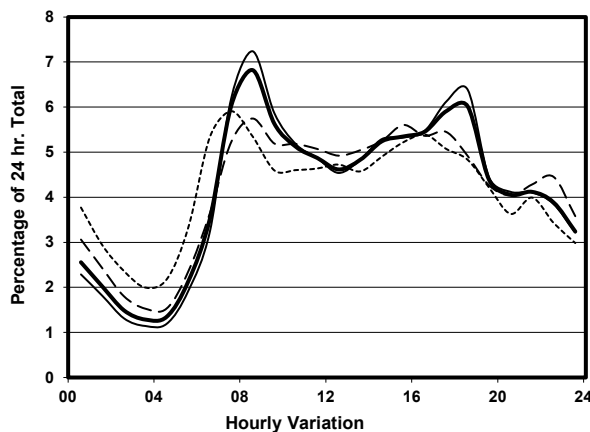
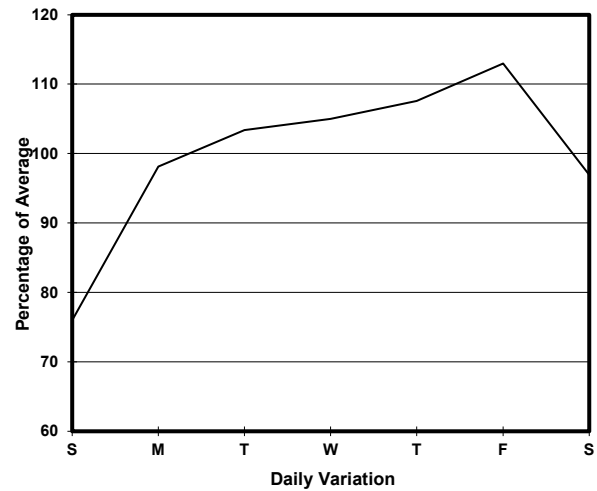
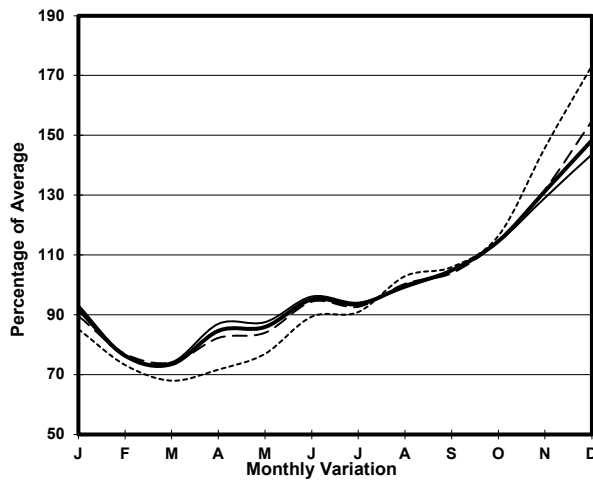
YEAR

2022

LINK

NORTH LANTAU HIGHWAY (from TUNG CHUNG  
EASTERN INT to WESTERN END AT CHEK LAP KOK)CORE STATION  
ROAD NETWORK  
ROAD TYPE5031  
MAJOR  
EXPRESSWAY

## 1. TRAFFIC FLOW VARIATION AND GROWTH



## 2. TRAFFIC CHARACTERISTICS (BY DIRECTION)

Parameter	All - Day	Mon. - Fri.	Sat.	Sun.
<b>EAST BOUND</b>				
A.A.D.T.	10140	10910	10030	7430
R 12 / 24 - %	63.8	65.3	60.3	57.9
R 16 / 24 - %	81.2	82.9	78.1	73.4
AM Peak Hour	0900-1000	0900-1000	0900-1000	0800-0900
One-way flow at AM peak hour	460	490	470	370
T - % (AM)	-	-	-	-
PM Peak Hour	1800-1900	1800-1900	1700-1800	1600-1700
One-way flow at PM peak hour	790	940	650	440
T - % (PM)	-	-	-	-
Prop.of commercial vehicles - 16 hr.	-	-	-	-
<b>WEST BOUND</b>				
A.A.D.T.	10190	10850	10090	7930
R 12 / 24 - %	68	69.4	65.7	61.7
R 16 / 24 - %	83.5	84.8	82	76.7
AM Peak Hour	0800-0900	0800-0900	0800-0900	0700-0800
One-way flow at AM peak hour	940	1110	710	580
T - % (AM)	-	-	-	-
PM Peak Hour	1600-1700	1600-1700	1600-1700	1600-1700
One-way flow at PM peak hour	500	520	520	390
T - % (PM)	-	-	-	-
Prop.of commercial vehicles - 16 hr.	-	-	-	-

## 3. OTHER INFORMATION AND COMMENT